



MVE 300/3

Three Phases - 2 poles - 3000 RPM - 50 Hz
230/400 Volt



Mechanical Features		Electric Features	
General		General	
Working Moment	6.39 kgcm	Nominal Voltage	Δ : 230 V Y : 400 V
Unbalance	3.2 kgcm	Input Power	0.27 kW
FC	321 kg	Current A Max	Δ : 0.9 A Y : 0.52 A
Bearings		Power factor	0.84
TYPE (SKF)	6303 2Z	Ia/In	3,6
	100% 1900	Certification	
Life(h)	80%: 3711	ETL CLASS II DIV.II GROUP F,G TENV NEMA 4	T4
	50%: 15202	ATEX II 3D Ex tc IIIC Tx IP66	T 100°
Bearing Grease		Amb Temp.	-20 ≤ T°C ≤ + 40
Lube Schedule (g)			
Lube Replacement (g)			
Grease Type			

Dimensional Features (mm)

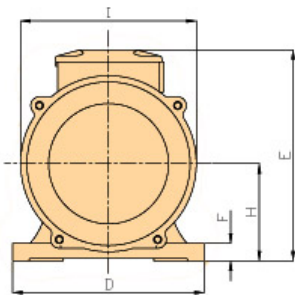
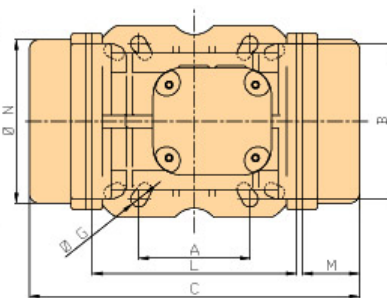


Fig. C



A	80 90 124 135
B	110 125 110 115
C	253
M	45
G	11 13 11 11
holes	4 4 4 4
D	154
E	175
F	15
H	79
I	142
L	163
N	131

Clamping
Torque(Nm)

45
80
45
45

[Drawings Download]

Weight(kg)	Screw	Washer	Cable Type	Cable Glande
9.8	M10	10.5x20	4Gx2.5	M20x1,5
	M12	13 x 24		
	M10	10.5x20		
	M10	10.5x20		