



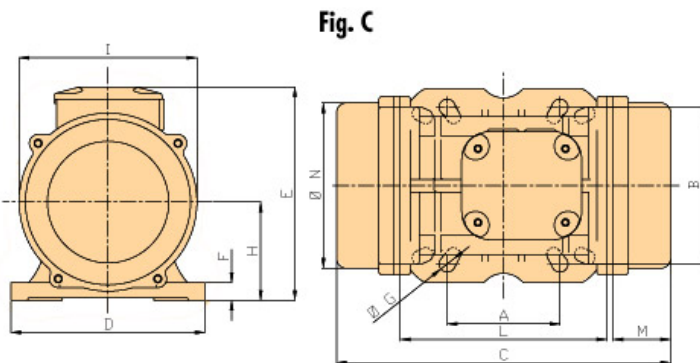
# MVE 400/3

Three Phases - 2 poles - 3000 RPM - 50 Hz  
230/400 Volt



Mechanical Features		Electric Features	
<b>General</b>		<b>General</b>	
Working Moment	7.96 kgcm	Nominal Voltage	$\Delta$ : 230 V    Y : 400 V
Unbalance	3.98 kgcm	Input Power	0.3 kW
FC	407 kg	Current A Max	$\Delta$ : 1.01 A    Y : 0.58 A
<b>Bearings</b>		Power factor	0.88
TYPE (SKF)	6304 2Z	la/In	3,5
Life(h)	100% 1512	<b>Certification</b>	
	80%: 2952	ETL CLASS II DIV.II GROUP F,G TENV NEMA 4	T4
	50%: 12093	ATEX II 3D Ex tc IIIC Tx IP66	T 100°
<b>Bearing Grease</b>		Amb Temp.	-20 ≤ T°C ≤ + 40
Lube Schedule (g)			
Lube Replacement (g)			
Grease Type			

## Dimensional Features (mm)



A	80 90 124 135
B	110 125 110 115
C	273
M	55
G	11 13 11 11
holes	4 4 4 4
D	154
E	175
F	15
H	79
I	142
L	163
N	131

Clamping Torque(Nm)

45  
80  
45  
45

[ Drawings Download ]

Weight(kg)	Screw	Washer	Cable Type	Cable Glannde
10.3	M10	10.5x20	4Gx2.5	M20x1,5
	M12	13 x 24		
	M10	10.5x20		
	M10	10.5x20		

