

Trimble Earthworks Grade Control Platform for Soil Compactors





Control Your Compaction

Get rolling with Trimble.

Ask for the next generation of machine control. From the company that invented machine control.

The **Trimble® Earthworks Grade Control Platform for Soil Compactors** helps operators of all levels roll a more efficient pattern to reach target passes and density faster. The next generation Android™ UI system with a large, friendly touch screen enables you to easily view compaction progress, pass counts and optional display and recording of the compacted soil stiffness.

Now available in a subscription model with flexible terms to modernize your equipment with no large upfront cost.





INTUITIVE SOFTWARE, RUGGED HARDWARE

Trimble Earthworks Software runs on the 10-inch (25.4 cm) Trimble TD520 display or the 7-inch (17.8 cm) Trimble TD510 display. Colorful graphics, natural interactions and gestures, and self-discovery features make Trimble Earthworks intuitive and easy to learn.

Each operator can personalize the interface to match their workflow and a variety of configurable views make it easier to see the right perspective for maximum productivity.

To ensure everyone is operating from the latest design, transfer data files to or from the office wirelessly and automatically using Trimble WorksManager Software, a mobile-friendly application that easily manages data and technology assets across project sites.

INTELLIGENT COMPACTION

Trimble Earthworks for soil compactors enables contractors to accurately control the compaction process, while reducing unnecessary passes that result in over compaction. The system achieves compaction target faster, more accurately and with less rework.

- ▶ Compact surface material to the desired compaction stiffness target and monitor site volumes simultaneously, in real time
- ▶ Soil and sub-surface material compaction measurement for single smooth drum and pad foot rollers
- ▶ Achieve increased durability, stability and load-bearing capacity

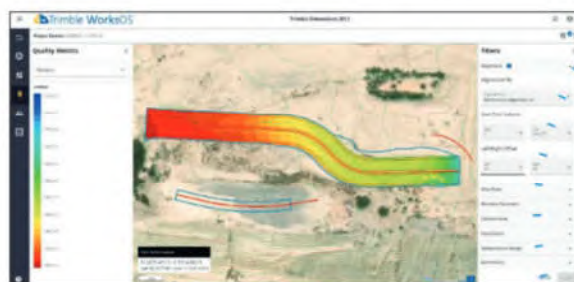
FOCUS ON GRADE

The Horizontal Steering Control feature is compatible with all soil compactors. It automatically controls the machine to follow any horizontal alignment such as a back of a curb, breakline, roadway centerline or bottom of slope, without operator assistance. Operators can also manually set up offsets from selected alignments that the machine can follow.

Horizontal Steering Control allows the operator to focus on the grade, machine productivity and safety rather than worrying about steering, which reduces operator fatigue and errors. It enables the machine to follow the horizontal guidance from the 3D model, providing operators increased awareness of their surroundings, better accuracy and improved productivity with decreased overlap and fewer passes.



Trimble WorksManager Software



Trimble WorksOS Software

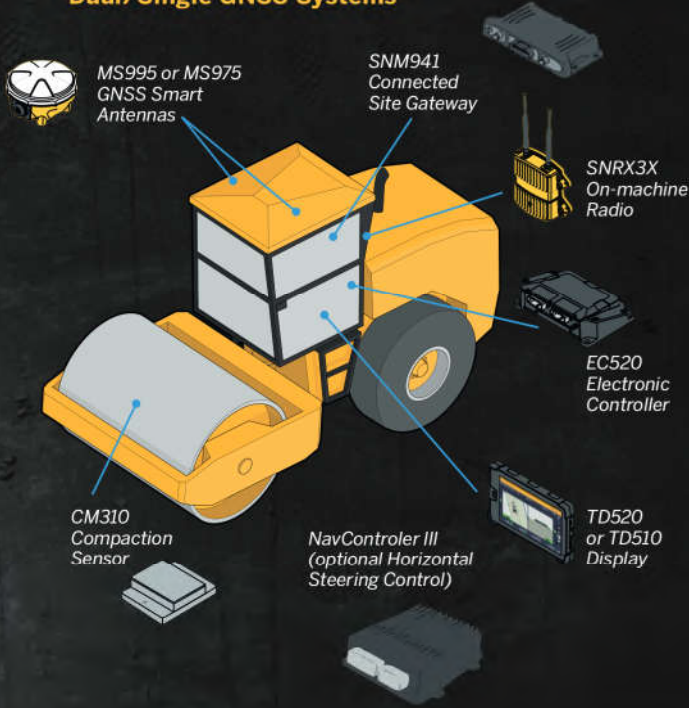
ACTIONABLE DATA

Supervisors and quality managers can monitor compaction activities in real-time, and operators can immediately identify the areas that require further compaction using Trimble WorksOS and Trimble Earthworks.

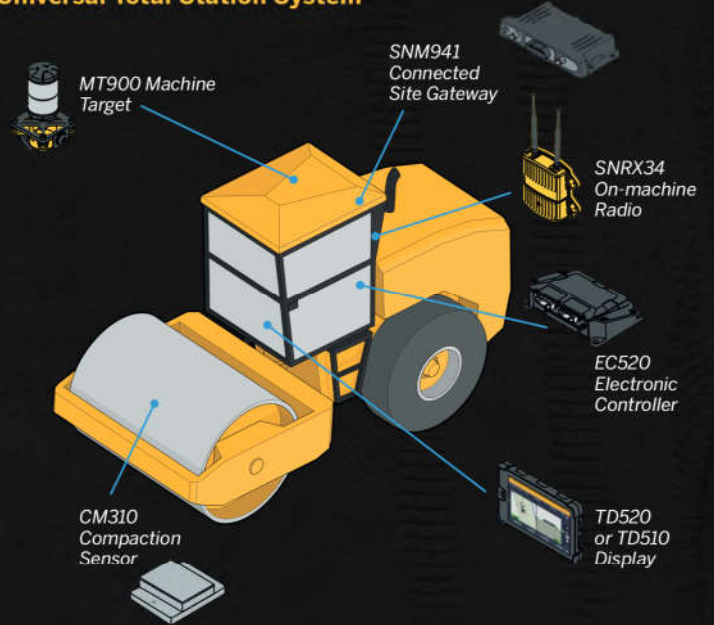
- ▶ Collect and document comprehensive, real-time compaction data
- ▶ Analyze data in the office to generate detailed reports and documentation to meet project specifications
- ▶ Continuously monitor pass counts and compaction measurement values (CMV) over the entire area
- ▶ Improve testing success, reduce rework and lower ongoing maintenance costs
- ▶ Reduce over-compaction to optimize fuel use and machine time such as work previously completed versus work completed that day

Trimble Earthworks: Soil Compactor Configurations

Dual/Single GNSS Systems



Universal Total Station System



Trimble Civil Construction

10368 Westmoor Drive
Westminster, Colorado 80021 USA
800-361-1249 (Toll Free)
+1-937-245-5154 Phone
construction_news@trimble.com

heavyindustry.trimble.com/earthworks

© 2021, Trimble Inc. All rights reserved. Trimble and the Globe & Triangle are trademarks of Trimble Inc., registered in the United States and other countries. PN 022482-4310B (12/21)

Transforming the way the world works.

